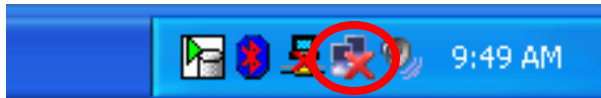
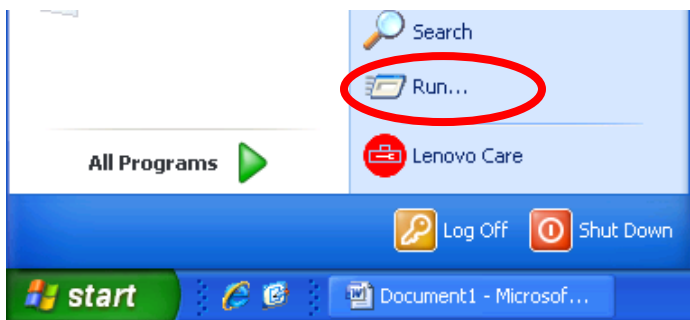


Connecting a new laptop to the Bethany local area network can be tricky. Many new laptop computers have their **Network Interface Card** (NIC) card disabled. This is due to the fact that most users connect their laptop computers wirelessly.

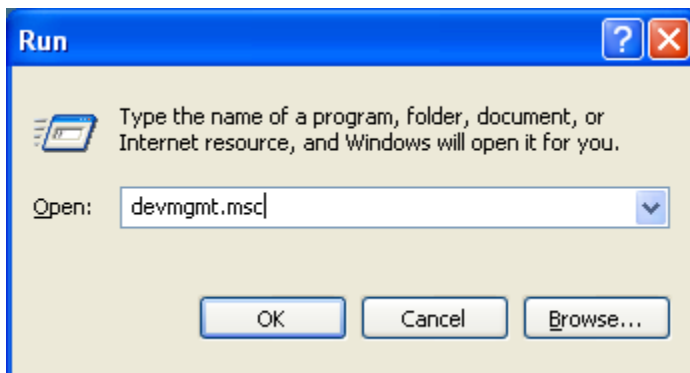
When you connect your laptop to the port in your dorm room, you may see an image like the one below at the bottom right-hand side of your screen.



To remedy this situation you can enable the NIC card. From your computer's desktop press the Windows button (⊞) and the letter "R" key simultaneously **OR** click **Start > Run**

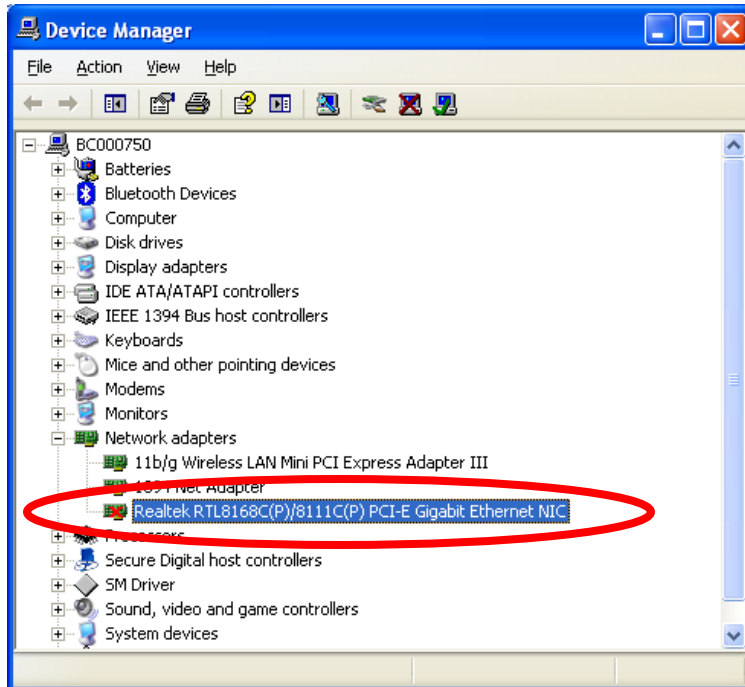


In the Run command, type **devmgmt.msc** and click "OK"

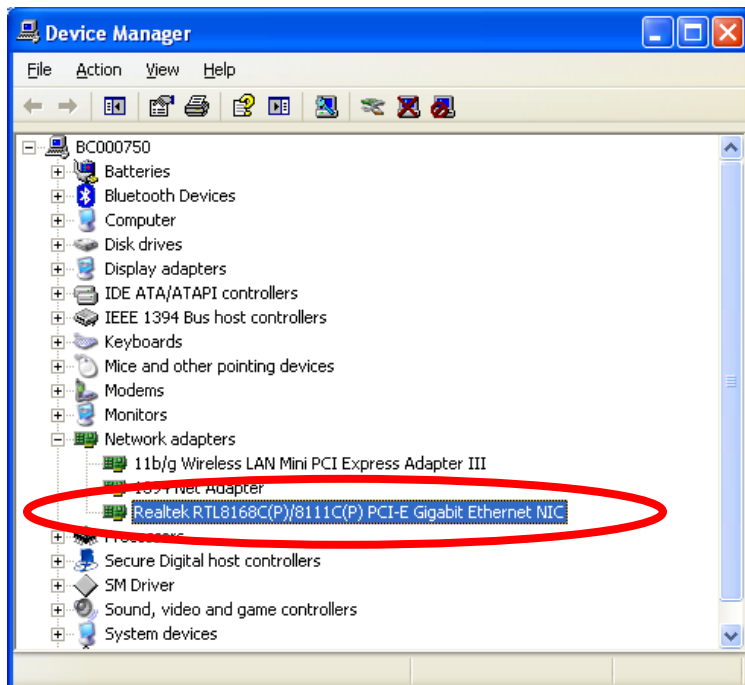


This command opens the computer's Device Manager. Find the "**Network adapters**" and click the plus sign (+) to expand the tree. If there is a red "**X**" by one of the adapters listed, right-click that adapter and select "**enable**". If there is not, locate the adapter that is NOT labeled "**wireless**" or "**1394**". Right click that adapter and select "**disable**", right click again and select "**enable**".

This screen shows the NIC is disabled



This screen shows the NIC is enabled. All better ahhhh!



You should now be able to connect to the Internet with your hard-wire connection.